



# Corona Ring OD-600

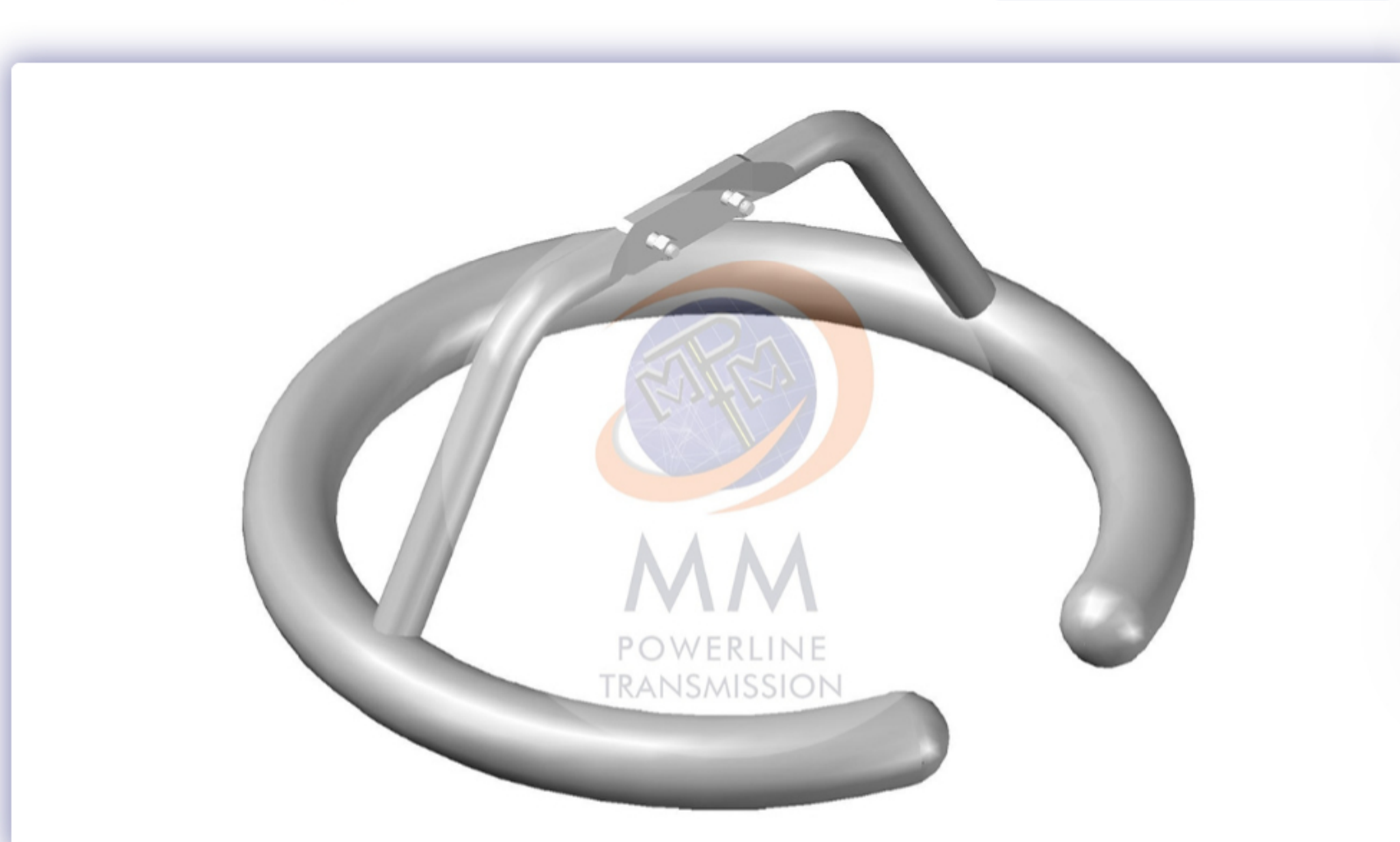
Home » Corona Ring Type » corona Ring OD-600

## Corona Ring OD-600

[Download Product details](#)

### Other Product Quick Link

- TENSION FITTINGS-Compression Type
- TENSION FITTINGS-Bolted Type
- SUSPENSION FITTINGS AGS Type
- SUSPENSION FITTINGS-Envelope Type-With Armour Rod
- SUSPENSION FITTINGS-Envelope Type-Without Armour Rod
- SUSPENSION FITTINGS-Free Centre Type-With Armour Rod
- SUSPENSION FITTINGS-Free Centre Type-Without Armour Rod



At MM POWERLINE TRANSMISSION, we are committed to providing reliable, safe, and efficient power transmission systems. One crucial component that supports these objectives is the Corona Ring (OD – 600). This essential piece of equipment plays a vital role in preventing corona discharge, protecting conductors and insulators, and maintaining the overall stability of our transmission lines. In this article, we will explore the features, functions, and significance of the Corona Ring (OD – 600) in our transmission infrastructure.

#### What is a Corona Ring (OD – 600)?

The Corona Ring (OD – 600) is a specialized device used to minimize the occurrence of corona discharge in overhead power transmission lines. Corona discharge happens when the electric field around a conductor is strong enough to ionize the surrounding air, causing energy loss, reduced efficiency, and potential damage to system components like insulators. The corona ring is installed around conductors to smooth the electric field, preventing corona discharge and ensuring the optimal performance and longevity of the transmission line.

The Corona Ring (OD – 600) is specifically designed with a 600mm outer diameter, making it compatible with various conductor types and configurations, thus offering protection against corona effects and enhancing the efficiency of the transmission system.

#### Key Features

- 1. Durable Construction:** The Corona Ring (OD – 600) is constructed from high-quality materials such as galvanized steel or aluminum, ensuring superior resistance to corrosion, high voltage, and environmental wear. This guarantees long-lasting performance in harsh operating conditions.
- 2. Efficient Design:** The design of the Corona Ring (OD – 600) allows it to evenly distribute the electric field around the conductor, reducing the risk of corona discharge. This design enhances the overall transmission system's efficiency and protects critical components.
- 3. Precise Fit:** With an outer diameter of 600mm, the Corona Ring (OD – 600) is designed to fit specific conductor types, ensuring a precise and stable connection to the transmission system. Its dimensions ensure optimal protection and performance.
- 4. Easy Installation:** The Corona Ring (OD – 600) is engineered for straightforward installation, making it easy to mount onto conductors. This reduces maintenance time and minimizes disruptions to the power transmission system.

#### Functions of the Corona Ring (OD – 600)

- 1. Preventing Corona Discharge:** The primary function of the Corona Ring (OD – 600) is to reduce the likelihood of corona discharge. By ensuring an even distribution of the electric field around the conductor, the corona ring helps prevent energy loss, degradation of components, and interference with the transmission line's operation.
- 2. Protecting Insulators:** The Corona Ring (OD – 600) helps shield the insulators from the damaging effects of corona discharge. This leads to enhanced insulator life and reduces the need for frequent replacements, helping to reduce operational costs.
- 3. Improving Power Transmission Efficiency:** By reducing corona discharge, the Corona Ring (OD – 600) helps improve the overall efficiency of the transmission system. Less energy is wasted in the form of corona, resulting in more efficient power delivery and enhanced system performance.
- 4. Enhancing Safety:** The Corona Ring (OD – 600) plays an important role in ensuring the safety of the power transmission system. By preventing corona discharge and reducing the risk of electrical faults, the ring helps ensure safe operation and protects both personnel and equipment.

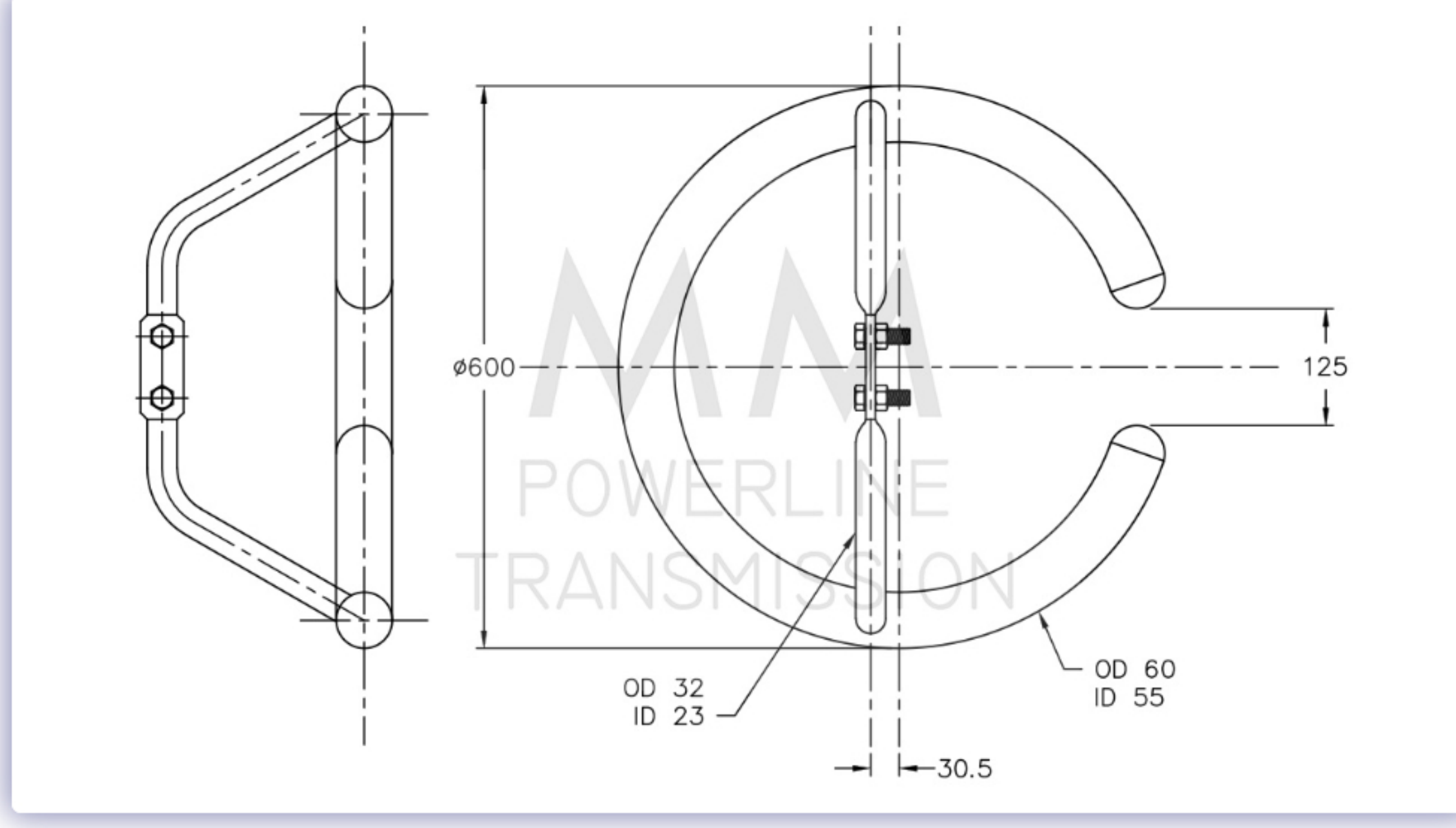
#### Importance in Transmission Line Systems

The Corona Ring (OD – 600) is crucial for the following reasons:

- **Safety:** By reducing corona discharge and minimizing electrical stress, the Corona Ring (OD – 600) helps prevent electrical faults, reducing the risk of accidents and ensuring the safety of both personnel and equipment.
- **Reliability:** The reliability of the transmission system depends on high-quality components. The Corona Ring (OD – 600) ensures that energy is transmitted efficiently, preventing power loss and helping to maintain a continuous and stable electricity supply.
- **Cost Efficiency:** The Corona Ring (OD – 600) contributes to lowering operational costs by extending the life of components such as conductors and insulators. With less frequent maintenance and fewer replacements needed, the overall cost of operating the transmission system is reduced.

#### Conclusion

The Corona Ring (OD – 600) is an integral component in the infrastructure of MM POWERLINE TRANSMISSION. Its role in preventing corona discharge, protecting critical components like insulators, and improving the efficiency and safety of power transmission lines is essential for ensuring a reliable and efficient electricity supply. As the demand for power continues to grow, maintaining an effective and resilient transmission network is more important than ever. The Corona Ring (OD – 600) plays a key role in safeguarding the integrity and reliability of our transmission systems. Proper installation and maintenance of this component are vital to meeting the increasing electrical needs of our communities and ensuring the long-term success of our power transmission network.



#### BOQ

SL. NO	DESCRIPTION	QTY	MATERIAL
1	CORONA RING	1 NOS	AL.ALLOY
2	BRACKET	1 NOS	AL.ALLOY/HDG STEEL
3	BOLT	2 NOS	HDG STEEL
4	NUT	2 NOS	HDG STEEL

#### TECHNICAL DATA

1. ALL DIMENSIONS ARE IN MM.
2. GENERAL TOLERANCE ±5% UNLESS OTHERWISE SPECIFIED.
3. FERROUS PART HOT DIP GALVANISED AS PER IS : 2633.
4. CORONA RING & BRACKET AL. ALLOY

#### Our Brands



#### Contact Us

- [Facebook](#)
- [Twitter](#)
- [Linkedin](#)

#### Quick Links

- [Home](#)
- [About Us](#)
- [Career](#)
- [Contact Us](#)

#### Address

**Office :** 2D.N.S.Road,shantinagar Colony,Compact Appt., Block-B,Flat-G001,Liluah,Howrah-711 204,West Bengal,India  
**Factory :** 58.N.S.Road,Liluah,Howrah – 711204,West Bengal,India  
 +91 8961536500  
 sales@mmpt.in

